

# Floor Plans: 452 Rothesay Place

Approx.: 3,214 sq. ft. above grade

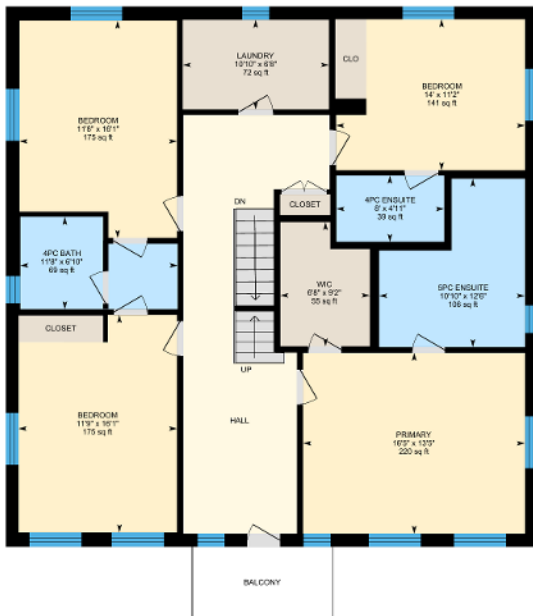
AB&A

AMY BRAY & ASSOCIATES

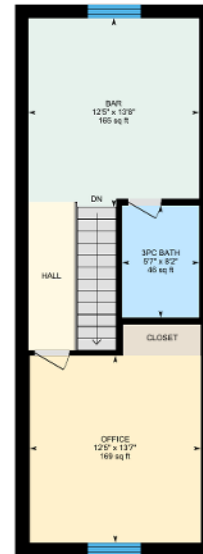
Approx.: 1,149 sq. ft



Approx.: 1,532 sq. ft



Approx.: 533 sq. ft



## AMY BRAY & ASSOCIATES

Amy Bray | Sales Representative, Sr. Vice President - Sales  
Alexandria Wood | Sales Representative

c 416.802.5017

t 905.845.0024

amybrayassociates@sothebysrealty.ca

amybrayandassociates.ca

Sotheby's | Canada  
INTERNATIONAL REALTY

For additional information,  
visit [amybrayandassociates.ca](http://amybrayandassociates.ca)